

Various Types & Sizes

We have various kinds of brushes for All different types of hair,
And even for your pets.

Check all of our brush lineups, and get a brush that fits your hair type.

Rainbow

**Volume S
Paddle**

깊고 넓게 시원하게 빗는 패들 시리즈
Paddle brushes to brush hair wide and deep

→



King Paddle
Black



King Paddle
Neo Pink



Paddle
Black



Paddle
Neo Pink

Rainbow

**Volume S
Large**

에티켓 거울로 특별한 스탠드 타입
Special standing hair brush with mirror

→



Large
Black



Large
Pink

Rainbow

Volume S

에티켓 거울로 특별한 스탠드 타입
Special standing hair brush with mirror

→



Medium
Black



Medium
Violet



Medium
Pink



Medium
Lime Green



Medium
Lovely Pink



Medium
Chic Black

Rainbow

**Volume S
Mini& Kids**

에티켓 거울로 특별한 휴대용 타입
Special portable standing hair brush with mirror

→



Mini
Black



Mini
Pink



Kids
Pink



Kids
Lime-Green

Rainbow

**Volume S
Compact**

보호캡과 팝업 브러쉬의 세련된 휴대용 타입
Compact pop-up hair brush with protective cap

→



Compact
Black



Compact
Pink



Compact
Neo Pink

Rainbow

Flower

에티켓 거울과 꽃 모양 디자인
Flower shaped hair brush with mirror

→



Flower Large
Black



Flower Large
Pink



Flower Medium
Black



Flower Medium
Pink

Rainbow

Handy

울트라씬 휴대용 브러쉬
Ultra thin portable hair brush

→



Halfmoon
Black



S-tree
Pink

Rainbow

**Jellypop
Perfume**

향기로운 머리를 위한 젤리팝 퍼퓸 라인
Jellypop perfume brush to make scented hair

→



Perfume
French lavender



Perfume
Black Cherry



Perfume
Mango

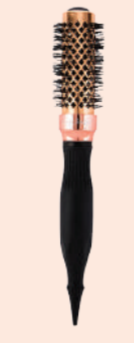
**Volume
Styling**

헤어스타일링에 유용한 헤어롤 타입
Round hair brush to easily style hair

→



Hot Curling roll
Bang Hair Control



Hot Curling roll
Volume Styling



Max Volume
White

**Eco-Friendly
Detangling**

친환경 소재의 가벼운 퀵-드라이 웨트 브러쉬
Eco-friendly quick dry brush for wet hair

→



Detangling
Coral Pink



Detangling
Coral Blue



Detangling
Coral Green

**Volume S
for PET**

향기가 나는 애완동물용 브러쉬
Scented hair brush for pets

→



Paddle



Large



Medium



Mini